



# CITY OF PORTLAND

## WEEKLY CAMPSITE REPORT

August 31 – September 6, 2020

### Last week, the Homelessness and Urban Camping Impact Reduction Program (HUCIRP):

- Conducted 1 campsite removals and 72 campsite cleanups.\*
  - \*Campsite removals indicate personal property has been removed and placed in storage. Cleanups mean no personal property was collected, only what was identified as garbage in addition to other biohazardous materials.
- Completed approximately 269 assessments—engaging with people living in camps, collecting garbage and biohazardous materials, and coordinating with service providers.

### This week we received:

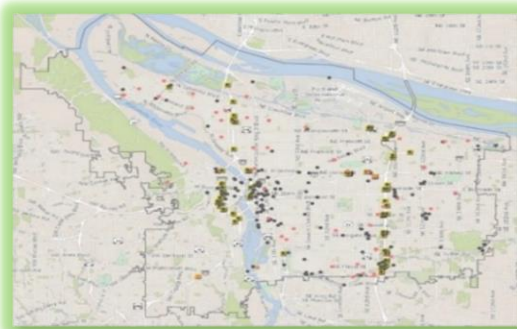
816 new campsite reports identifying 190 active campsites throughout the City.

### Of these reports:

- 199 were reports of people living in vehicles.

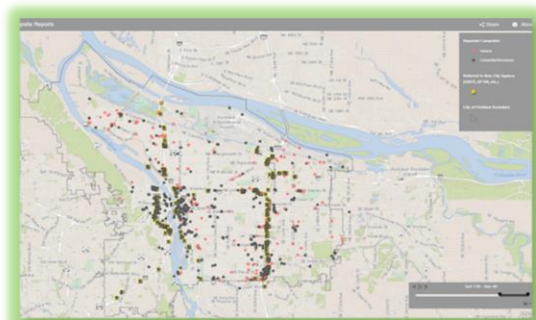
Due to COVID-19, HUCIRP has developed this protocol with regard to campsite cleanups:

<https://www.portlandoregon.gov/toolkit/article/756745>



**CLICK ON THE MAP ABOVE  
TO SEE ALL LOCATIONS  
REPORTED LAST WEEK**

**CLICK ON THE MAP BELOW TO  
SEE ALL LOCATIONS  
REPORTED IN THE LAST 12  
WEEKS**





# Homelessness/Urban Camping Impact Reduction Program Update:

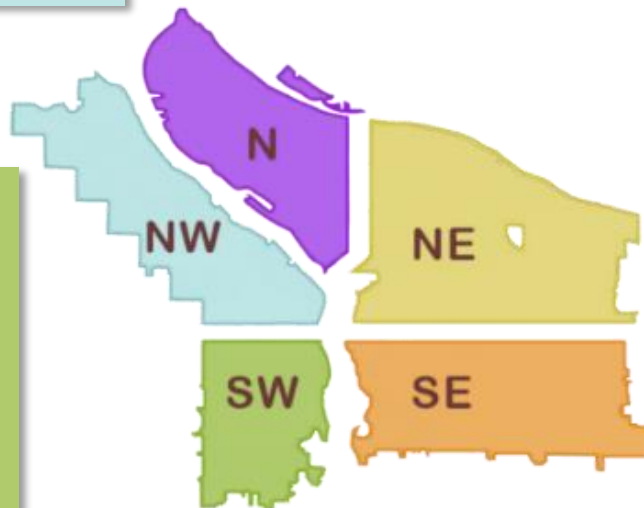
## Last week we cleaned the following locations\*:

*\*locations listed in italics indicate trash/debris/biohazards removal only*

- *NW 5th and NW 6th from NW Glisan to NW Irving*
- *NW 16th and NW Raleigh*
- *NW 16th and NW Pettygrove*
- *NW 2nd and NW Davis*
- *NW 9th to NW 10th and NW Couch*
- *NW Broadway and NW Glisan*
- *West Steel Bridge*
- *NW 15th and W Burnside*
- *NW 8th and NW Glisan*

- *N Ida and N Kellogg*
- *I-5 and N Victory*
- *I-5 NB N Lombard to N Bryant*
- *I-5 SB and N Rosa Parks*

- *NE Grand and NE Lloyd*
- *NE 38th and NE Sandy*
- *NE 112th and NE Marx*
- *4600 NE 135th*
- *NE 6th and NE Everett*
- *NE 82nd and NE Columbia Loops*
- *NE 33rd to NE 35th and NE Halsey*



- *SW 1st and SW Arthur St*
- *SW 13th and SW Market*
- *SW Park and SW Ankeny*
- *SW 13th and SW Main*
- *I-405 and SW 12th St off ramp*
- *I-405 SB on ramp from SW Montgomery*
- *SW 10th and SW Clifton*
- *SW 4th and SW Salmon*
- *SW 10th and SW Clay*
- *SW 3rd Avenue b/w SW Pine and SW Oak*
- *SW 5th and SW Jefferson*
- *SW Natio and SW Sherman*

- *I-205 MUP SE Powell-SE Division*
- *I-205 MUP SE Division-SE Market*
- *I-205 MUP SE Holgate-SE Powell*
- *SE Water and SW Salmon St*
- *SWCT SE Foster-SE 110th*
- *I-205 and SE Division NB on ramp*
- *I-205 r/w east of I-205 from SE Flavel to SwCT*
- *SWCT SE 92nd -SE Foster*
- *SE 96th and SE Main*
- *SE 6th and SE Ivon*
- *I-205 MUP NE Killingsworth-NE Alderwood*
- *I-205 and SE Powell NB On-ramp*
- *SE 92nd and SE Crystal Springs*
- *I-205 and SE Division NB off ramp*
- *SE 115th and SE Foster*
- *I-205 and Gateway Green*
- *I-205 MUP SE Clatsop- SE Flavel*
- *SE Mt. Scott and SE Knapp st*
- *Knapp St west of SE 92nd*
- *I-205 and SE Foster SB off ramp*
- *SE Flavel and SE Mt Scott*

- *I-205 MUP SE Market-SE Stark*
- *I-205 and SE Powell NB off ramp*
- *SE 11th and SE Alder*
- *SE 6th and SE Washington to SE Stark*
- *SE 8th and SE Pine*
- *SE 111th and SE Harold*
- *SE Knapp st and SE 92nd*
- *SE 10th and SE Washington*
- *SE 35th and SE Yamhill*
- *SE 8th and and SE Yamhill*
- *SE Mt. Scott and SE Knapp*
- *SE Salmon St from SE 9th Ave – SE 11th Ave*
- *SE 8th and SE Taylor*
- *SE 26th and SE Raymond*
- *I-205 MUP E Burnside-NE Glisan*
- *I-205 MUP SE Holgate -SE Harold*
- *Kelley Butte at SE Powell*
- *I-205 MUP NE Prescott-NE Killingsworth*



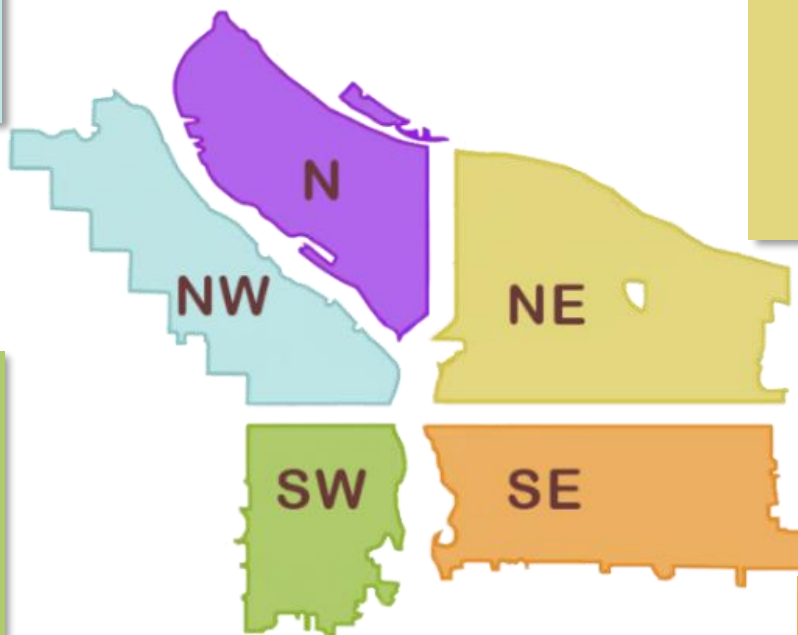
## This week we are cleaning the following locations:

- Columbia Slough Bridge and N Vancouver
- I-5 NB and Winchell
- I-5 NB Lombard to Bryant
- N Albina and Hunt
- I-5 and N Victory
- N Vancouver under I-5

- Denver and Schmeer hillside
- N Willamette and Maryland
- N Williams and Weidler
- N Larrabee and Hancock
- I-5 SB and Rosa parks
- I-5 NB Rosa Parks
- I-5 SB Failing to Kaiser
- N Fremont and Missouri

- NE 33rd to 35th and Halsey
- NE 122<sup>nd</sup> and NE Multnomah
- I-205 MUP Prescott-Killingsworth
- Rocky Butte
- I-205 MUP Killingsworth-Alderwood
- NE 105th and Fremont
- Big 4 Corners
- Colwood East side
- Big Four North
- I-84 Eastbound Near NE 8th and Glisan
- NE 33rd Marine Dr to Elrod
- NE 82nd and Columbia Loops
- NE Schuyler 78th to 81st
- NE MLK and I-84
- NE Grand and Lloyd

- NW St Helens and Kittridge
- NW 15th and W Burnside
- NW 5th and 6th From Glisan to Irving



- SW Barbur and Luradel
- SW 10th and Clifton
- SW 64th and Coronado I-5 SB
- I-405 SB on ramp from Montgomery
- I-405 and 12th St off ramp
- SW 13th and Market
- SW 26th and Barbur
- SW 19th and Multnomah
- SW 17th and Multnomah
- SW Barbur and Terwilliger
- SW 12th and Salmon
- SW College and Cardinal

- SE 16th and Powell
- SE 97th to SE 99th and Pine
- Laurelhurst Park
- SE 35th and Yamhill
- SE 11th and Alder
- SE 8th and Taylor
- Foster Floodplain
- Brookside
- Zen Gardens
- Brookside Property
- Oaks bottom hillside
- SE 10th and Washington
- SE 6th and Washington to Stark
- SE 8th and Pine
- SE 8th and Yamhill
- I-205 and Powell NB On-ramp
- SE 26th and Raymond