



# CITY OF PORTLAND

## WEEKLY CAMPSITE REPORT

September 14 – September 20, 2020

### Last week, the Homelessness and Urban Camping Impact Reduction Program (HUCIRP):

- Conducted 3 campsite removals and 27 campsite cleanups.\*
  - \*Campsite removals indicate personal property has been removed and placed in storage. Cleanups mean no personal property was collected, only what was identified as garbage in addition to other biohazardous materials.
- Completed approximately 149 assessments—engaging with people living in camps, collecting garbage and biohazardous materials, and coordinating with service providers.

### This week we received:

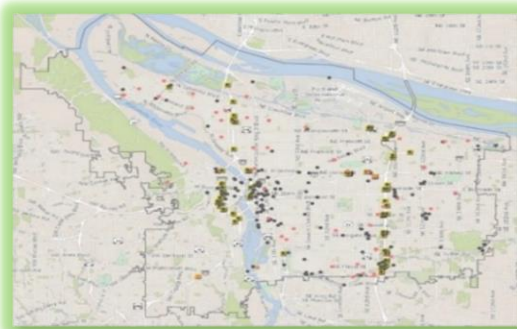
683 new campsite reports identifying 93 active campsites throughout the City.

### Of these reports:

- 167 were reports of people living in vehicles.

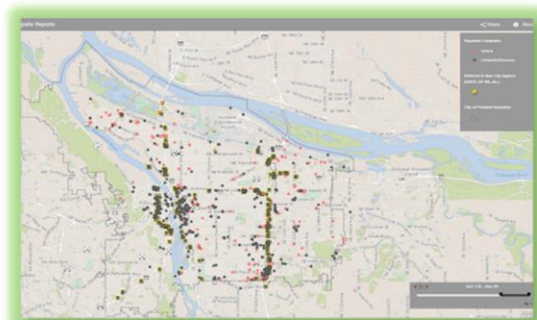
Due to COVID-19, HUCIRP has developed this protocol with regard to campsite cleanups:

<https://www.portlandoregon.gov/toolkit/article/756745>



**CLICK ON THE MAP ABOVE  
TO SEE ALL LOCATIONS  
REPORTED LAST WEEK**

**CLICK ON THE MAP BELOW TO  
SEE ALL LOCATIONS  
REPORTED IN THE LAST 12  
WEEKS**





# Homelessness/Urban Camping Impact Reduction Program Update:

## Last week we cleaned the following locations\*:

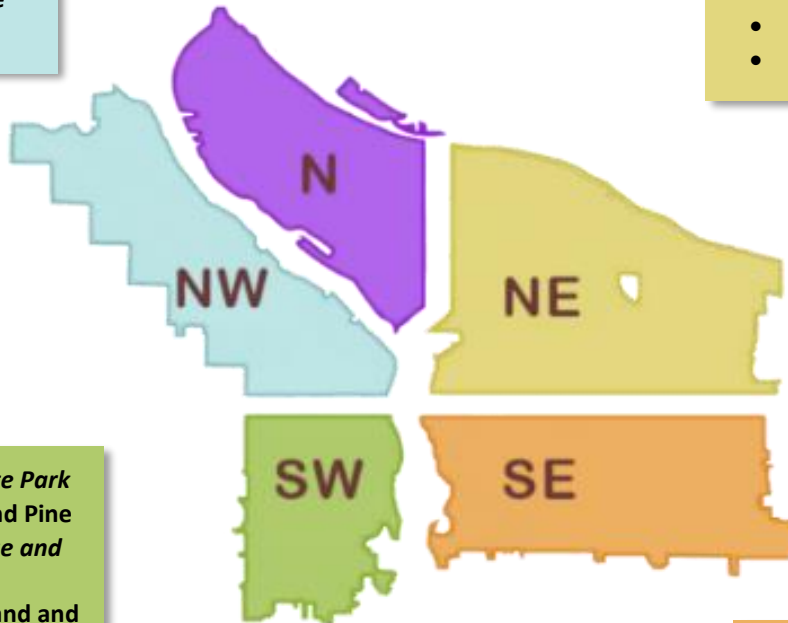
*\*locations listed in italics indicate trash/debris/biohazards removal only*

Note: Due to severe weather conditions, operational capacity was extremely limited the week of 9/14-9/20/2020.

- *NW Davis and Broadway*
- *NW 5th and 6th from Glisan to Irving*
- *NW St Helens and Kittridge*
- *NW 16th and Johnson*

- *N Columbia and Congress*
- *N Larrabee and Hancock*
- *N Williams and Weidler*
- *N end of Broadway Bridge*

- *I-205 MUP Killingsworth-Alderwood*
- *I-205 MUP Burnside-Glisan*
- *NE 67th and Halsey I-84 WB*
- *I-205 Burnside-Glisan*



- *Willamette Park*
- *SW 3rd and Pine*
- *SW College and Cardinal*
- *SW Highland and Canyon Ct*

- *I-205 Stark-Burnside*
- *Alley b/t SE 62nd/63rd and Rhone*
- *I-205 MUP SWCT-Foster*
- *I-205 MUP and Holgate-Powell*
- *I-205 MUP and Powell-Division*
- *SE 92nd and Crystal springs*
- *I-205 MUP Harold-Holgate*
- *I-205 MUP and Market-Stark*
- *Knapp St.*
- *Mt. Scott and Knapp st*
- *I-205 and Powell NB off ramp*
- *SE 35th and Hawthorne*
- *SE 9th and Woodward*
- *SE 96th and Main*



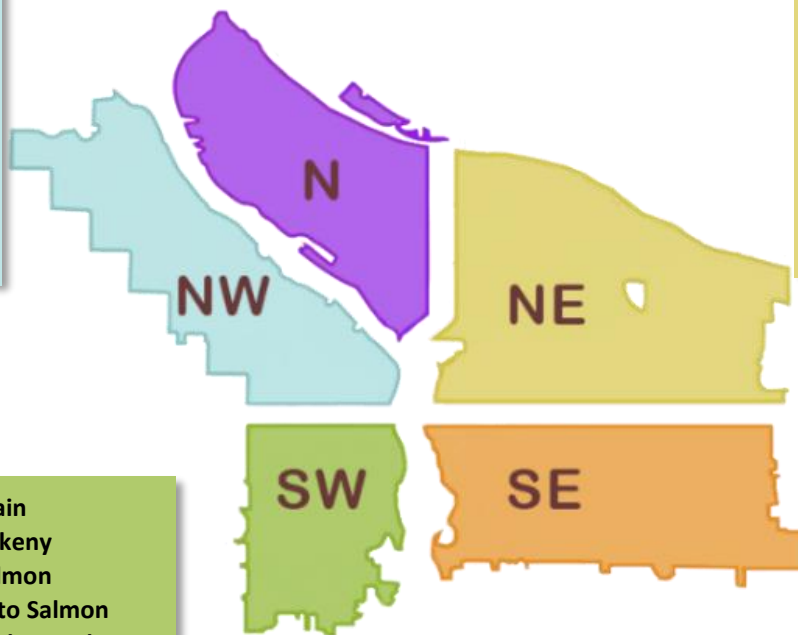
## This week we are cleaning the following locations:

- N Albina and Hunt
- Columbia Slough Bridge and N Vancouver
- PCT
- I-5 NB and Winchell
- I-5 SB Failing to Kaiser
- N Wheeler and Dixon

- Denver and Schmeer hillside
- N Fremont and Missouri
- N Vancouver under I-5
- N Willamette and Maryland
- Victory and I-5
- I-5 NB and Rosa Parks

- NE 60th and Cully-Prescott
- NE 122nd and Multnomah
- I-205 and Glisan SB Underpass
- NE 1st and Lloyd
- NE Grand and Lloyd
- NE MLK and I-84
- Rocky Butte
- Big 4 Corners
- Colwood East side
- NE 105th and Fremont
- NE 33rd Marine Dr to Elrod
- NE 8th and Broadway
- NE Emerson and MLK
- I-84 Eastbound Near NE 8th and Glisan
- I-205 MUP Burnside-Glisan
- 97 NE Burnside

- NW 16th and Pettygrove
- NW 16th and Raleigh
- NW 9th to 10th and Couch
- NW Broadway and Glisan
- West Steel Bridge
- NW 2nd and Davis
- NW 5th to 6th Glisan to Irving
- NW 22nd pl and Reed



- SW 13th and Main
- SW Park and Ankeny
- SW 12th and Salmon
- SW 13th Taylor to Salmon
- SW 17th and Multnomah
- SW 19th and Multnomah
- SW 26th and Barbur
- SW 64th and Coronado I-5 SB
- SW Barbur and Luradel
- SW Barbur and Terwilliger
- SW Barbur and Multnomah
- West End Ross Island Bridge

- SE 6th and Washington - Stark
- SE 97th to SE 99th and Pine
- SE 8th and Pine
- Laurelhurst
- Kelly Butte
- SE Powell 74th-76th
- SE 111th and Harold
- Alice Springs
- Brookside
- Foster Floodplain
- SWCT Foster-110th
- SE Tacoma and Berkeley
- I-205 MUP Harold-Holgate
- SWCT Flavel-92nd
- SWCT 82nd-Flavel
- SE 92nd and Tenino
- Zen Gardens
- SE Powell 53rd-55th
- SE Powell 57th-58th
- SE Powell 60th-61st
- I-205 MUP Clatsop-flavel
- SE 92nd and Flavel
- Knapp St
- I-205 and Powell
- I-205 and Division
- I-205 MUP Division-Market
- Oaks bottom hillside
- SE 16th and Powell