



CITY OF PORTLAND

WEEKLY CAMPSITE REPORT

September 7 – September 13, 2020

Last week, the Homelessness and Urban Camping Impact Reduction Program (HUCIRP):

- Conducted 2 campsite removals and 8 campsite cleanups.*
 - *Campsite removals indicate personal property has been removed and placed in storage. Cleanups mean no personal property was collected, only what was identified as garbage in addition to other biohazardous materials.
- Completed approximately 166 assessments—engaging with people living in camps, collecting garbage and biohazardous materials, and coordinating with service providers.

This week we received:

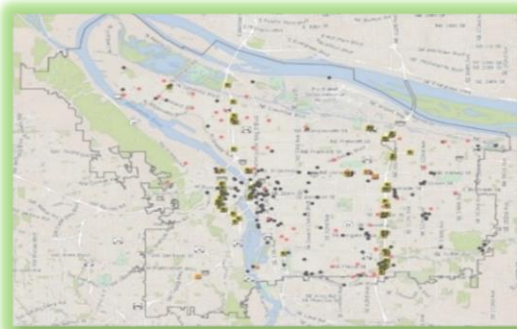
619 new campsite reports identifying 104 active campsites throughout the City.

Of these reports:

- 125 were reports of people living in vehicles.

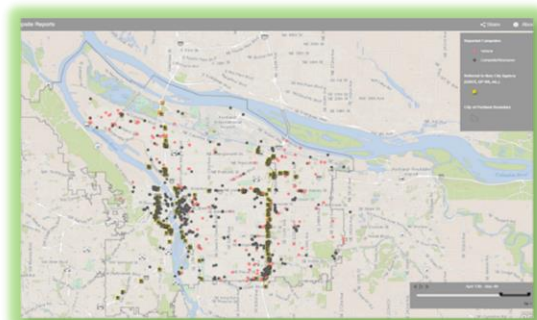
Due to COVID-19, HUCIRP has developed this protocol with regard to campsite cleanups:

<https://www.portlandoregon.gov/toolkit/article/756745>



**CLICK ON THE MAP ABOVE
TO SEE ALL LOCATIONS
REPORTED LAST WEEK**

**CLICK ON THE MAP BELOW TO
SEE ALL LOCATIONS
REPORTED IN THE LAST 12
WEEKS**





Homelessness/Urban Camping Impact Reduction Program Update:

Last week we cleaned the following locations*:

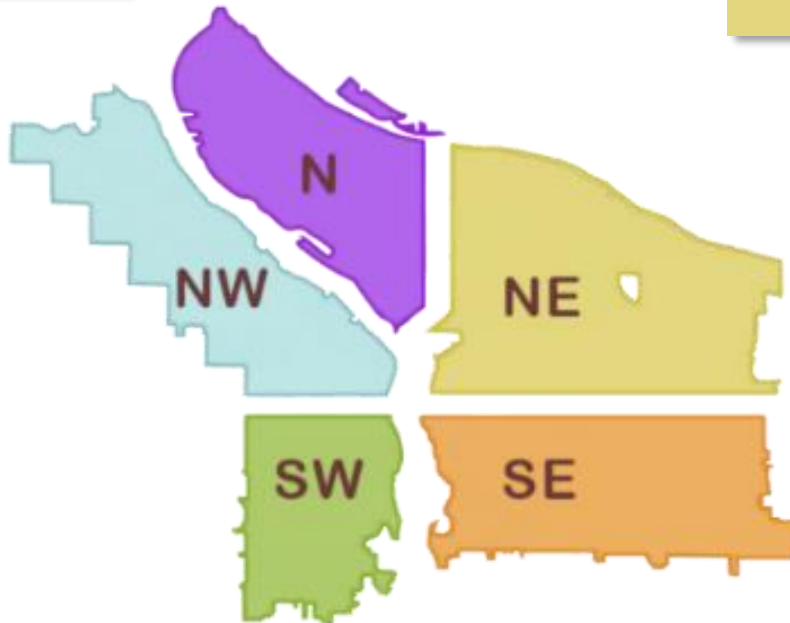
**locations listed in italics indicate trash/debris/biohazards removal only*

Note: Due to severe weather conditions, operational capacity has been extremely limited.

- *I-5 and N Victory*

- *NW Kittridge and St. Helens*

- *NE Schuyler 78th to 81st*



- *SE 92nd and Flavel under Bridge by Trimet bus stop*
- *SE 92nd and Crystal springs*
- *7200 SE Martins*
- *SE 45th and Madison*
- *SWCT 136th-175th*
- *SWCT 110th-136th*
- *Knapp St*



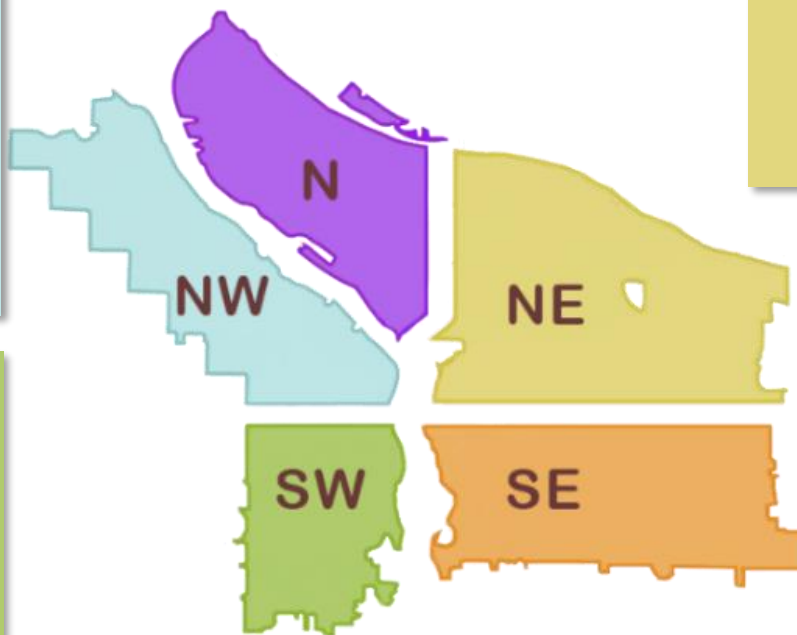
This week we are cleaning the following locations:

- PCT
- Columbia Slough Bridge and N Vancouver
- N Fremont and Missouri
- N Larrabee and Hancock
- N Vancouver under I-5

- N Willamette and Maryland
- N Williams and Weidler
- I-5 NB and Winchell
- I-5 SB Failing to Kaiser
- N Albina and Hunt
- Victory and I-5
- Denver and Schmeer hillside

- I-205 MUP Burnside-Glisan
- NE Grand and Lloyd
- NE 122nd and Multnomah
- NE 67th and Halsey I-84 WB
- NE MLK and I-84
- Rocky Butte
- Alice Springs
- Big 4 Corners
- I-84 Eastbound Near NE 8th and Glisan
- NE 105th and Fremont
- NE 33rd Marine Dr to Elrod
- NE 8th and Broadway
- NE Emerson and MLK
- NE 122nd and Multnomah
- Colwood East side

- NW 5th and 6th from Glisan to Irving
- NW St Helens and Kittridge
- NW 16th and Pettygrove
- NW 16th and Raleigh
- NW 2nd and Davis
- NW 9th to 10th and Couch
- NW Broadway and Glisan
- West Steel Bridge



- SW College and Cardinal
- SW 13th and Main
- SW Park and Ankeny
- SW 12th and Salmon
- SW 13th Taylor to Salmon
- SW 17th and Multnomah
- SW 19th and Multnomah
- SW 26th and Barbur
- SW 64th and Coronado I-5 SB
- SW Barbur and Luradel
- SW Barbur and Terwilliger

- I-205 MUP and Market-Stark
- SE Knapp St
- Mt. Scott and Knapp St
- SE 96th and Main
- I-205 MUP Harold-Holgate
- SE 6th and Washington - Stark
- SE 8th and Pine
- SE 97th to SE 99th and Pine
- Brookside
- Kelly Butte
- Laurelhurst
- Foster Floodplain
- I-205 and Powell
- I-205 MUP and Holgate-Powell
- I-205 MUP and Powell-Division
- Oaks bottom hillside
- SE 16th and Powell
- Zen Gardens
- SE Powell 53rd -55th