



CITY OF PORTLAND

WEEKLY CAMPSITE REPORT

August 17 – August 23, 2020

Last week, the Homelessness and Urban Camping Impact Reduction Program (HUCIRP):

- Conducted 7 campsite removals and 71 campsite cleanups.*
 - *Campsite removals indicate personal property has been removed and placed in storage. Cleanups mean no personal property was collected, only what was identified as garbage in addition to other biohazardous materials.
- Completed approximately 326 assessments—engaging with people living in camps, collecting garbage and biohazardous materials, and coordinating with service providers.

This week we received:

833 new campsite reports identifying 236 active campsites throughout the City.

Of these reports:

- 198 were reports of people living in vehicles.

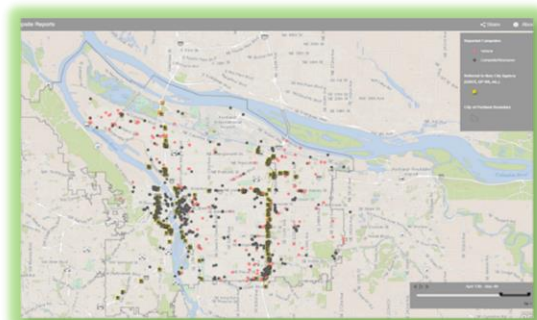
Due to COVID-19, HUCIRP has developed this protocol with regard to campsite cleanups:

<https://www.portlandoregon.gov/toolkit/article/756745>



**CLICK ON THE MAP ABOVE
TO SEE ALL LOCATIONS
REPORTED LAST WEEK**

**CLICK ON THE MAP BELOW TO
SEE ALL LOCATIONS
REPORTED IN THE LAST 12
WEEKS**





Homelessness/Urban Camping Impact Reduction Program Update:

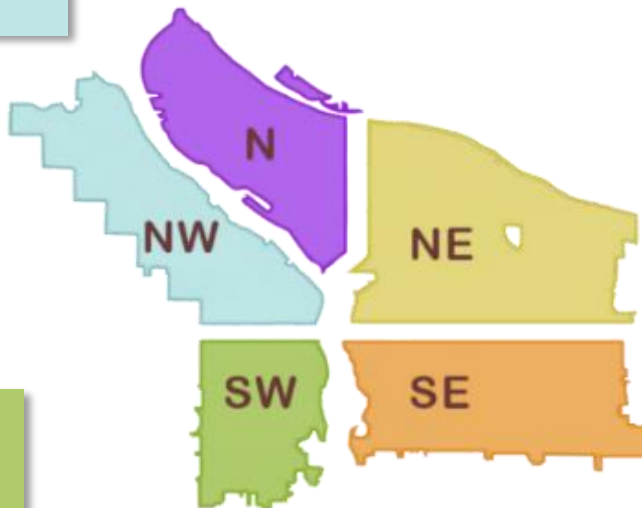
Last week we cleaned the following locations*:

**locations listed in italics indicate trash/debris/biohazards removal only*

- NW 16th and Pettygrove
- *NW 5th to 6th From Glisan to Irving*
- *NW Broadway and Glisan*
- *NW 16th and Raleigh*
- *NW 2nd and Davis*
- *West Steel bridge*
- *Hwy 30 and NW Kittridge*
- *NW 14th and Couch*

- *PCT*
- *1001 N Kerby*
- *N Ainsworth and Minnesota*
- *I-5 and I-405 Split*
- *8929 N Ramsey*
- *10298 N Lombard*

- *NE 122nd and Oregon*
- *NE 160th and Barr*
- *NE 112th and Marine Dr*
- *I-205 MUP from Burnside to Glisan*
- *NE Grand And Lloyd*
- *NE 99th and NE Irving*
- *NE 122nd and Oregon*
- *NE 122nd and Multnomah*
- *NE 82nd and Milton*
- *NE 60th and Cully*
- *I-205 and Burnside - Glisan*
- *NE Alderwood and Glass Plant*
- *10526 NE Klickitat*



- *SW 13th and Main*
- *SW Park and Ankeny*
- *Fire Station 1*

- *SE 92nd and SE Crystal Springs*
- *Knapp st*
- *SE 66th Ave - 65th Ave Alley*
- *I-205 MUP from Clatsop to Flavel*
- *I-205 MUP Powell-Division*
- *I-205 MUP Holgate-Powell*
- *I-205 MUP from Holgate to Powell*
- *I-205 and Powell SB On-ramp*
- *I-205 and Division NB off ramp*
- *I-205 and Division NB on ramp*
- *SE 96th and SE Main*
- *I-205 MUP Division-Market*
- *SWCT Flavel-92nd*
- *SWCT Foster-110th*
- *I-205 MUP from Flavel to SWCT*
- *SWCT SE 92nd-SE Foster*
- *SE Pine SE 97th to SE 99th*
- *SE 94th and SE Caruthers*
- *SE 122nd and Rhone*
- *SE 99th and Pine*

- *Burnside and 162nd*
- *SE 88th and Powell*
- *I-205 MUP from Harold to Holgate*
- *Kelly Butte 1*
- *SE 124th and Powell*
- *SE Powell and MUP*
- *I-205 and Foster SB Offramp*
- *SE Division and Grand*
- *SWCT from SE 82nd to Flavel*
- *SE 94th and Boise*
- *I-205 exit 19 SB*
- *Knapp st*
- *SE 106th and Henderson*
- *Laurelhurst Park*
- *I-205 and Division NB off ramp near church*
- *East of I-205 near Flavel*
- *92nd and Flavel*
- *SE 136th and Powell*
- *SE 92nd and Tenino - ODOT*
- *SE 6th- Washington to Stark*
- *SE 8th and Pine*
- *SE 94th- Raymond to SE Foster*
- *I-205 and Powell NB*
- *Kelly Butte*
- *SE 104th and Reedway*
- *I-205 and Powell*
- *SE 96th and SE Market*
- *I-205 and Burnside - Stark*



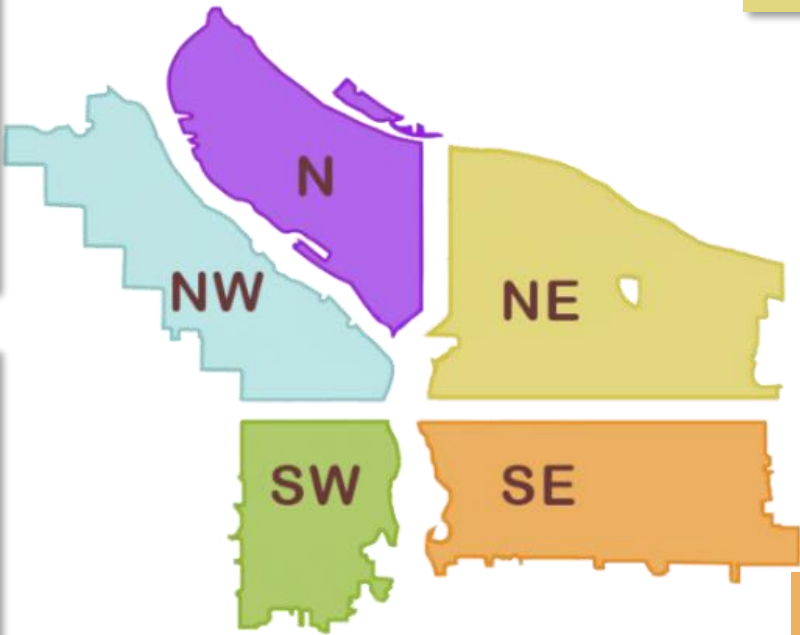
This week we are cleaning the following locations:

- Denver and Schmeer hillside
- Columbia Slough Bridge and N Vancouver
- I-5 SB Lombard to Bryant
- N Willamette and Maryland
- N Williams and Weidler
- N Larrabee and Hancock
- N Albina and Hunt

- N Larrabee and Dixon
- N Schmeer Denver to Whitaker
- I-5 NB and Winchell
- I-5 NB Lombard to Bryant
- N Vancouver under I-5

- NE Grand and Lloyd
- NE 33rd to 35th and Halsey
- NE 105th and Fremont
- Big 4 Corners
- Colwood East side
- Big Four North
- NE 33rd Marine Dr to Elrod
- I-84 Eastbound Near NE 8th and Glisan
- NE 17th and Argyle
- NE MLK and I-84

- NW Broadway and Glisan
- NW 2nd and Davis
- West Steel Bridge
- NW 16th and Pettygrove
- NW 16th and Raleigh
- NW 5th to 6th Glisan to Irving
- NW 20th and Thurman
- NW St Helens and Kittridge



- SW Barbur and Luradel
- SW 10th and Clifton
- SW 13th and Main
- SW Park and Ankney
- SW 64th and Coronado
- I-405 near Montgomery
- I-405 and 12th St
- SW 13th and Market
- SW 26th and Barbur
- SW 19th and Multnomah
- SW 17th and Multnomah
- SW Barbur and Terwilliger
- SW 12th and Salmon
- SW College and Cardinal
- SW 11th and Columbia
- SW Naito and Harrison

- Brookside
- Zen Gardens
- Brookside Property
- Oaks bottom hillside
- SE 10th and Washington
- I-205 MUP Division-Market
- I-205 and Foster NB On-ramp
- Knapp st
- SWCT Flavel-92nd
- East of I-205 near Flavel

- SE 88th and Powell
- SE Powell and 53rd to 55th
- I-205 MUP Market and Stark
- I-205 near Lent elementary
- SWCT 82nd-Flavel
- SE Powell 57th and 58th
- SWCT 92nd-Foster
- SE 54th and Powell

- SE 60th-61st and Powell
- Laurelhurst
- SE 8th and Pine
- SE 6th between Washington and Stark
- SE 79th and Powell
- SE Powell 60th and 61st
- SE Powell and 74th -76th
- SE 35th and Yamhill
- SE 11th and Alder
- I-205 and Division
- 11207 SE Foster Rd
- I-205 MUP Harold-Holgate
- Kelly Butte
- SE 96th and Market
- SE 96th and Main
- I-205 MUP Burnside-Glisan
- SE 35th pl and Powell
- SE 16th and Powell
- Foster Floodplain