



CITY OF PORTLAND

WEEKLY CAMPSITE REPORT

August 10 – August 16, 2020

Last week, the Homelessness and Urban Camping Impact Reduction Program (HUCIRP):

- Conducted 1 campsite removal and 73 campsite cleanups.*
 - *Campsite removals indicate personal property has been removed and placed in storage. Cleanups mean no personal property was collected, only what was identified as garbage in addition to other biohazardous materials.
- Completed approximately 317 assessments—engaging with people living in camps, collecting garbage and biohazardous materials, and coordinating with service providers.

This week we received:

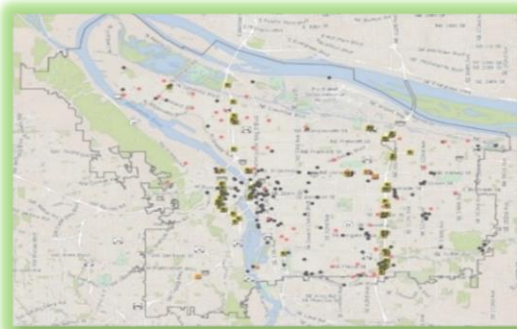
854 new campsite reports identifying 210 active campsites throughout the City.

Of these reports:

- 206 were reports of people living in vehicles.

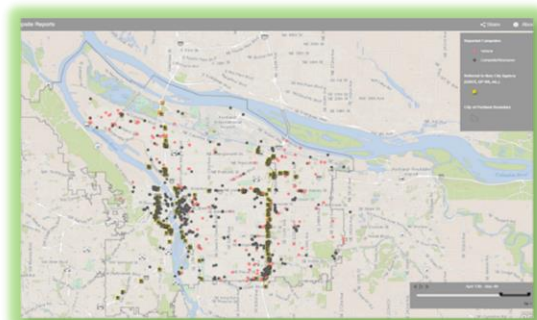
Due to COVID-19, HUCIRP has developed this protocol with regard to campsite cleanups:

<https://www.portlandoregon.gov/toolkit/article/756745>



**CLICK ON THE MAP ABOVE
TO SEE ALL LOCATIONS
REPORTED LAST WEEK**

**CLICK ON THE MAP BELOW TO
SEE ALL LOCATIONS
REPORTED IN THE LAST 12
WEEKS**





Homelessness/Urban Camping Impact Reduction Program Update:

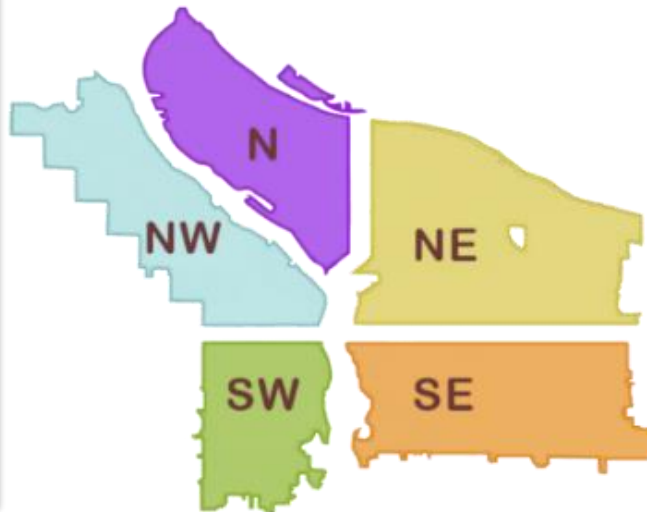
Last week we cleaned the following locations*:

**locations listed in italics indicate trash/debris/biohazards removal only*

- West steel bridge
- NW 16th and Raleigh
- NW 16th and Pettygrove
- NW 2nd Ave - fence repair
- NW Glisan at I-405
- NW 2nd Everett to Davis
- NW Broadway and Hoyt
- NW Broadway and Irving
- NW 5th from Irving to Hoyt
- NW 6th from Irving to Hoyt
- NW 2nd - 3rd and Glisan
- NW 2nd - 3rd Flanders to Everett
- NW 3rd - 4th and Everett
- NW 2nd Davis to Couch
- NW 2nd and 3rd and Davis
- NW Glisan between Broadway and 6th
- NW Broadway and Glisan
- NW 5th and Flanders to Glisan

- I-5 SB N Skidmore to Going
- Victory Blvd Both sides
- 1610 N Pier 99th
- PCT North of Lombard
- N Failing Ped. Bridge East Side
- 8112 N Swenson
- N Fremont and Missouri
- I-5 SB Lombard to Winchell

- Johnson Lake Trailhead
- 9110 NE 33rd Dr
- NE 103rd and Wasco
- Rocky Butte 2
- NE Grand and Lloyd
- NE 58th and Glisan
- I-205 MUP Gateway-Green
- Rocky Butte Rd
- Rocky Butte 1
- I-205 SB Offramp to Glisan
- NE 89th and Emerson
- 4350 NE 133rd



- SW Park and Ankeny
- SW 13th and Main

- Knapp St
- I-205 MUP Clatsop/Flavel
- 12411 SE Powell
- SE 82nd and SE Bush
- SE 82nd and Crystal Springs
- I-205 at Flavel
- SE Powell and 136th
- East Side I-205, North of Flavel
- I-205 and Powell SB off ramp
- SWCT SE 92nd-SE Foster
- I-205 and Oliver lent school
- SE 92nd and SE Crystal Springs
- I-205 MUP Clatsop-Flavel
- SE 92nd and SE Mt Scott
- SE 96th and SE Duke
- SWCT SE Flavel-SE 92nd

- SE Powell and 124th
- Hawthorne bridge head
- Laurelhurst Park
- SE 11th and Alder
- SE 57th and Powell
- SE 96th and SE Main
- Greater St Francis area
- SE 10th and Washington
- CEID
- Eastbank Esplanade
- SE 111th From Foster to Harold
- SE 9th and Taylor
- SE 88th and Powell
- I-205 MUP Harold-Holgate
- I-205 MUP Burnside-Glisan
- Kelly Butte
- SE 6th and Washington to Stark
- SE 8th and Pine



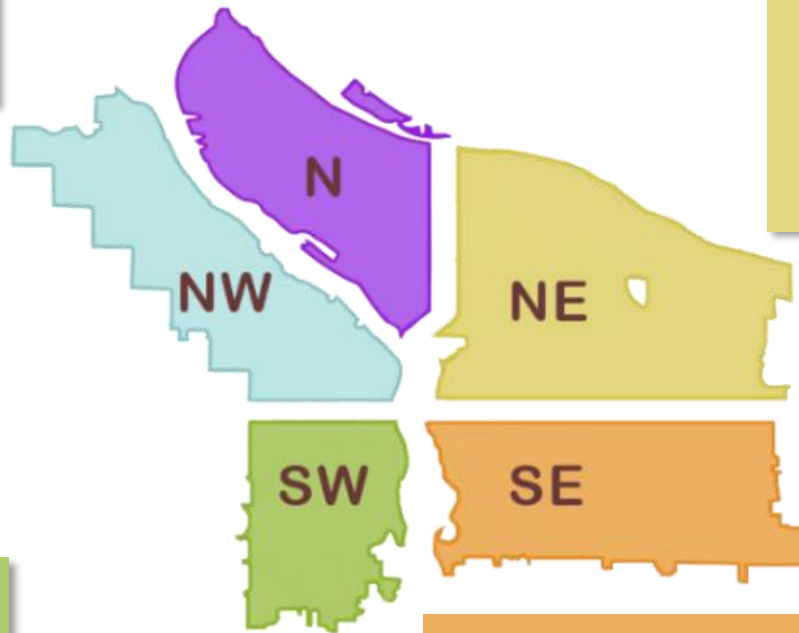
This week we are cleaning the following locations:

- PCT
- Denver and Schmeer hillside
- I-5 NB Lombard to Bryant
- N Schmeer Denver to Whitaker
- I-5 SB Lombard to Bryant
- N Ainsworth and Minnesota

- N Vancouver under I-5
- N Willamette and Maryland
- I-5 NB and Winchell
- Columbia Slough Bridge and N Vancouver

- NE 112th and Marine dr
- NE 99th and NE Irving
- NE 122nd and Oregon
- NE 122nd and Multnomah
- NE 82nd and Milton
- NE 60th and Cully
- Big 4 Corners
- Colwood East side
- Big Four North
- NE 33rd Marine Dr to Elrod
- NE 33rd to 35th and Halsey
- NE 105th and Fremont
- 10526 NE Klickitat
- I-205 MUP from Burnside to Glisan
- I-84 Eastbound Near NE 8th and Glisan

- Hwy 30 and NW Kittridge
- NW 14th and Couch



- I-405 SB on ramp from Montgomery
- I-5 and I-405 Split
- I-405 and 12th St
- SW 64th and Coronado I-5 SB

- SE 66th Ave - 65th Ave Alley
- I-205 MUP from Clatsop to Flavel
- I-205 MUP from Harold to Holgate
- I-205 MUP from Holgate to Powell
- I-205 and Powell
- I-205 at Division
- Laurelhurst Park

- Kelly Butte
- SE Powell and MUP
- SE 88th and Powell
- SE 79th and Powell
- I-205 MUP Powell-Division
- SWCT Foster-110th
- SE 16th and Powell
- Foster Floodplain
- Brookside
- Zen Gardens
- Brookside Property
- Oaks bottom hillside
- I-205 MUP Holgate-Powell
- SE 92nd and Tenino
- Knapp St

- SE Pine SE 97th to SE 99th
- SE 94th SE Raymond to SE Foster
- SE 94th and SE Caruthers
- SE 122nd and Rhone
- SE 99th and Pine
- SE 54th and Powell
- SE 60-61st and Powell
- SE 136th and Powell
- SE 124th and Powell