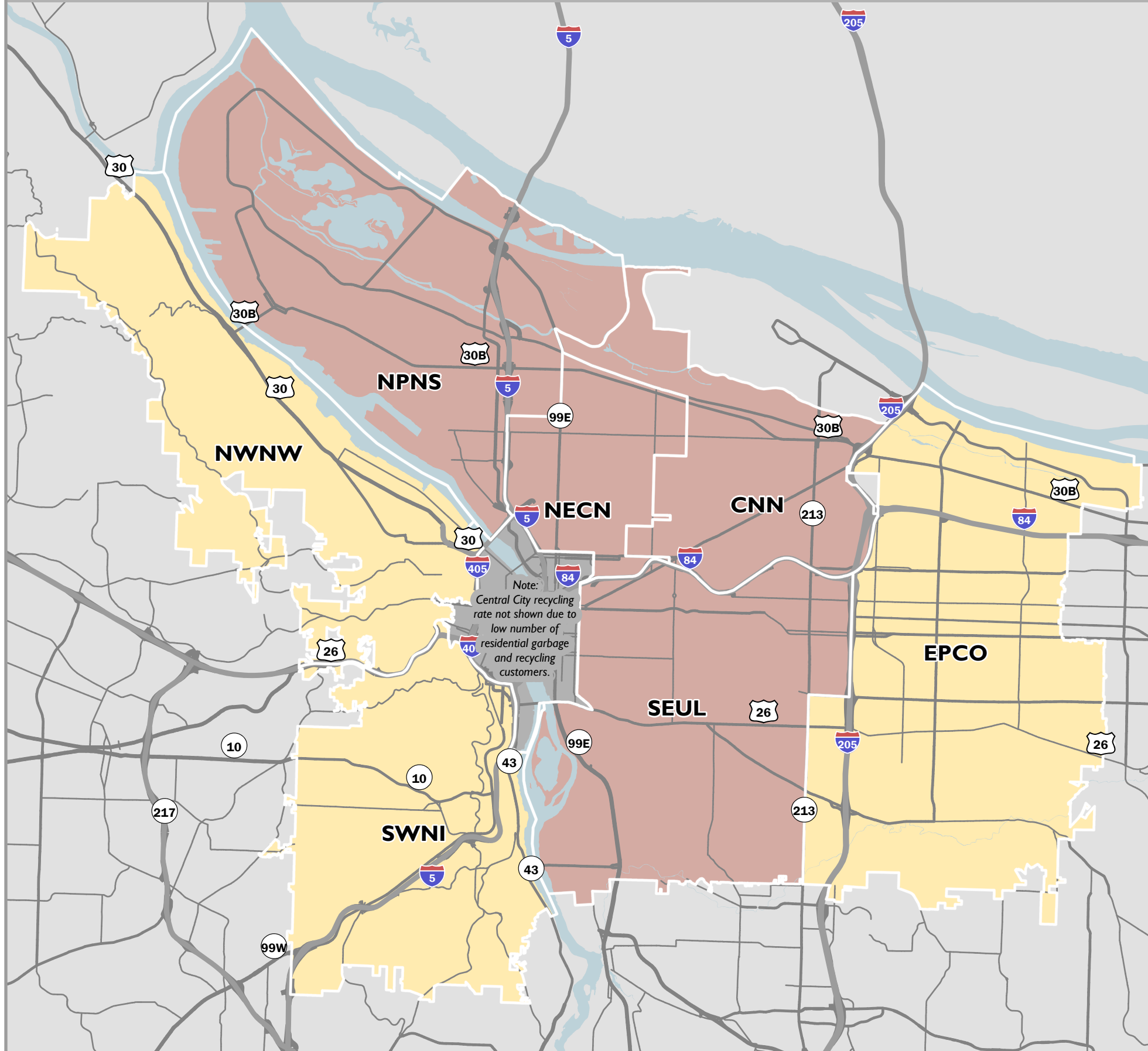


RESIDENTIAL CURBSIDE RECOVERY RATE (recycling plus composting)

FY2020-21 PORTLAND BUREAU OF PLANNING & SUSTAINABILITY



Note:
Central City recycling rate not shown due to low number of residential garbage and recycling customers.

BUREAU NOTES

Residential Curbside Recovery Rate

	Total Tons Collected	Total Tons Recovered	Recovery Rate Percent (%)
CENT	NA	NA	NA
CNN	21,509	14,331	66.6%
EPCO	46,187	30,130	65.3%
NWNW	8,149	5,176	63.8%
NPNS	25,639	16,982	66.1%
NECN	24,456	16,214	66.3%
SEUL	65,240	43,533	66.8%
SWNI	27,075	17,670	65.4%
CITYWIDE	219,026	144,556	66.0%

This map shows the total material recycled and composted through Portland's residential curbside program, as a percentage of all material collected curbside, measured by weight. The curbside recovery rate is calculated for each residential garbage and recycling company using the tonnage they report collecting from their single family households and smallplex (2-4 units) customers.

The amount of garbage, recycling, and yard debris/ food scraps collected from Portland residents increased by about 22,500 tons in 2020 due to the COVID-19 global pandemic.

Portland businesses generate 65 percent of Portland's total waste, but the information is not reported geographically and thus is not included in this map. In the residential sector, 10 garbage and recycling companies in Portland serve geographic areas that do not correspond to neighborhood boundaries, and in many cases companies serve multiple areas that are not contiguous.

The curbside recovery rates on this map are calculated based only on materials collected curbside and do not take into account material recycled through the bottle bill, dropped off at depots, or other means. Thus, the recovery rates shown on this map are different than the actual residential recovery rate calculated for the city. Compared to the national average recovery rate of 35%, all areas of Portland are doing very well.

The estimated recovery rates for each neighborhood coalition are calculated by averaging the percent of each coalition served by a given garbage and recycling company by that company's overall recovery rate.

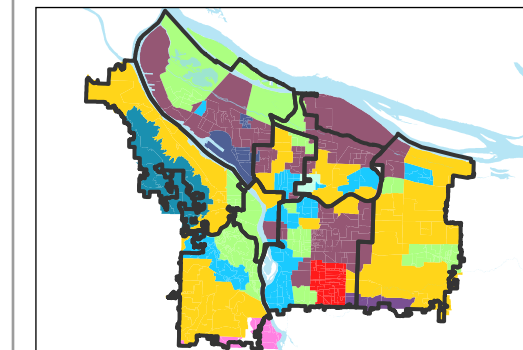
LEGEND

Percentage (%) of Total Residential Curbside Material Recovered, 2020-21

- 62.2% - 63.7%
- 63.8% - 66.1%

GIS Data Classification Method - Natural Breaks
2 classes illustrate the consistency across the City Data Ranges by Coalition: 63.8% through 66.8%
Source: Bureau of Planning and Sustainability

Hauler Collection Areas



Mapping Geographies

- CENT** - Central City
- CNN** - Central Northeast Neighborhood
- EPCO** - East Portland Community Office
- NECN** - Northeast Coalition of Neighborhoods
- NPNS** - North Portland Neighborhood Services
- NWNW** - Neighbors West/Northwest
- SEUL** - Southeast Uplift Neighborhood Coalition
- SWNI** - Southwest Neighbors, Inc.

The information on this map was derived from City of Portland GIS databases. Care was taken in the creation of this map but it is provided "as-is". The City of Portland cannot accept any responsibility for error, omissions, or positional accuracy, and therefore, there are no warranties which accompany this product. However, notification of any errors will be appreciated.

