

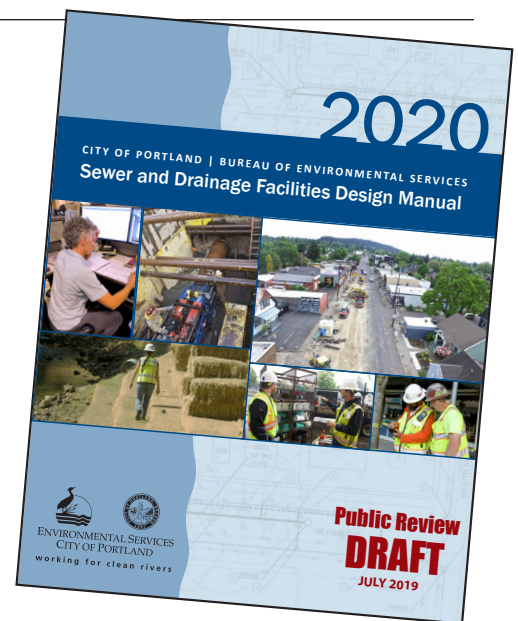
working for clean rivers

The Bureau of Environmental Services works with Portland residents and businesses to protect water quality, public health, and the environment through wastewater collection and treatment, sewer construction and maintenance, stormwater management, and stream and watershed restoration.



PROPOSED UPDATE Sewer and Drainage Facilities Design Manual

The current edition of the BES *Sewer and Drainage Facilities Design Manual* (SDFDM) is more than 10 years old. Since its publication in 2007, construction technology, pipeline materials, and project planning and design methodologies have evolved. Importantly too, the expectations of manual users have changed regarding the availability of information online. As a result, Environmental Services is proposing updates to the manual that will improve clarity, formalize and update technical requirements, eliminate obsolete information, and remove any discrepancies between the SDFDM and the City's Stormwater Management Manual (SWMM).



What changes are proposed?

The 2020 SDFDM combines the 2007 manual with its 2008 and 2011 errata. Other proposed **high-priority changes** include:

- **Proposing potential hydrologic design changes** that de-emphasize single event peak flow calculations and introduce continuous event modeling to give

continued on back



ENVIRONMENTAL SERVICES
CITY OF PORTLAND
working for clean rivers

Nick Fish, Commissioner
Michael Jordan, Director

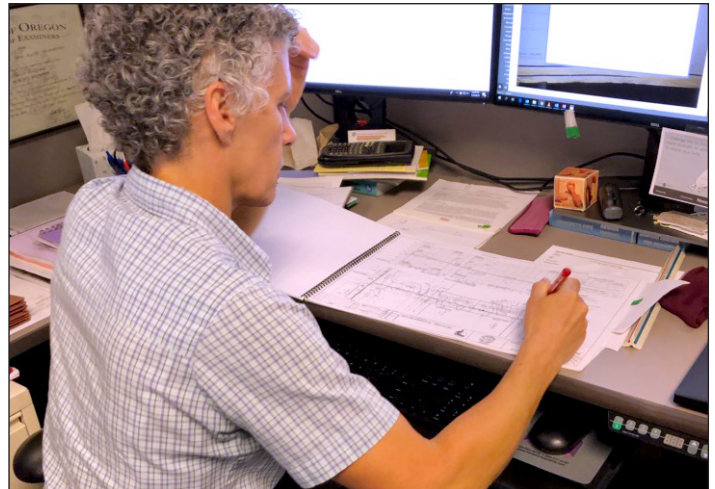
Updates to the Sewer and Drainage Facilities Design Manual

designers and developers more tools and options to meet requirements.

- **Expanding approved pipe materials.** We updated the pipe materials table, added the pipe matrix, and removed pipe types, like unreinforced concrete that is not available. We added BES acceptable materials, like strong walled PVC, to increase designers' options.
- **Adding consistency and cohesion with the SWMM.** Sections with design requirements and guidelines for drainageways and stormwater facilities were reorganized for better alignment with the SWMM making it faster and easier for designers working with both manuals to find information.
- **Expanding content to address advancements in:**
 - ✓ Trenchless technologies, which are now financially feasible.
 - ✓ Pipe and large-diameter pipe rehabilitation to give designers more choices to fit solutions.
 - ✓ Basic CSO Control System operation because the system came online after the original design manual was published.
 - ✓ Seismic and climate change resiliency.
- **Improve access to online resources.** Much of the information in the SDFDM's appendices has been updated by the originating agencies and the latest information is available online. The new version of the SDFDM will reference the online tools in place of appended materials.

How can I tell what's different?

A variety of guides are available at www.portlandoregon.gov/bes/2020SDFDM to help navigate the revised document. In addition, BES will



hold informational sessions to present key changes and major improvements to the SDFDM. Learn more about the sessions on the website.

How can I comment on the proposed changes?

BES will accept public comment on the proposed changes to the SDFDM from 8 a.m. Monday, Aug. 5 through 5 p.m. Friday, Sept. 6. Public comments may be submitted using the online form at www.portlandoregon.gov/bes/2020SDFDM or by email to sdfdmcomments@portlandoregon.gov. BES will hold a public hearing **by request only** from 6–7 p.m. Thursday, Aug. 29 in the Lovejoy Room of City Hall, 1221 SW 4th Ave., Portland, OR 97204. To request a public hearing, contact Ben Fitch at Ben.Fitch@portlandoregon.gov. BES must receive a request to hold a public hearing no later than 5 p.m. Wednesday, Aug. 21 or the hearing will be canceled. Notice of the cancellation will be posted at www.portlandoregon.gov/bes/2020SDFDM.

When will the changes become effective?

The new SDFDM will take effect January 2020. After January, all new projects will be required to follow the standards in the 2020 SDFDM.

Where can I find more information?

- **Online**—www.portlandoregon.gov/bes/2020SDFDM
- **By phone**—Colleen Harold, 503-823-5564
- **By email**—sdfdmcomments@portlandoregon.gov

